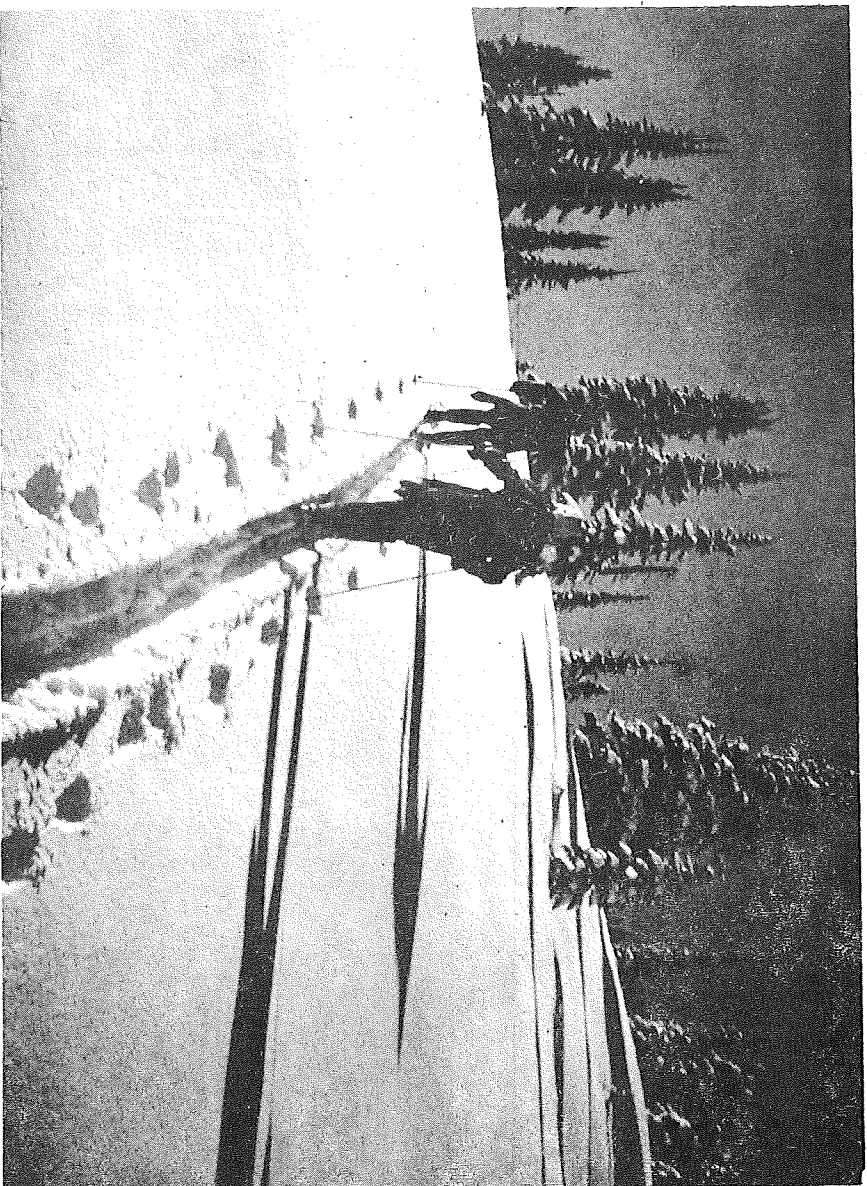


# BIG WHITE SKI AREA



..... 18 inches of fresh powder snow in a beautiful alpine setting is normal for Canada's newest ski hill - BIG WHITE MOUNTAIN only one hour and fifteen minutes by good road from Kelowna.

One hour and fifteen minutes from Kelowna in a beautiful alpine setting is a skiers paradise, known as Big White Mountain. The mountain was opened to skiers this winter by two young Kelowna men, Doug Meryn and Cliff Serwa. There is a 5,500 ft. Doppelmayr T-Bar with a vertical rise of 1,350', which can handle 500 skiers per hour, in operation at the slope and by Easter the lift will be able to handle 800 skiers per hour. The portion of the mountain presently in use could easily handle up to 5,000 skiers at one time and the mountain, if fully developed, could handle an unlimited number. The extent of the area and the perfect snow conditions almost defies the imagination. So far this year (which is a normal year for Big White) the slope has had the best snow conditions in Western Canada. At present there is 5½ feet of snow with 10" of fresh powder snow on top. What could be more perfect?

The operators of this skiing paradise are seriously thinking of installing another lift this summer to increase the uphill capacity to 1,800 skiers per hour.

Skiers are a travelling breed and like to try as many slopes as possible. It is normal for real enthusiasts to go on a skiing holiday and travel a circuit, in which they can ski several slopes in the course of a week or more.

Many of these skiers never get any further than Big White and they are outspoken in their praise of the beautiful setting, the perfect snow conditions, the variety of ski runs, etc.

On Big White there are slopes for every skier, no matter what his proficiency, be it novice, beginner, intermediate or professional.

Whole families can go on ski outings and all ski the type of slope they desire without being more than a short distance apart.

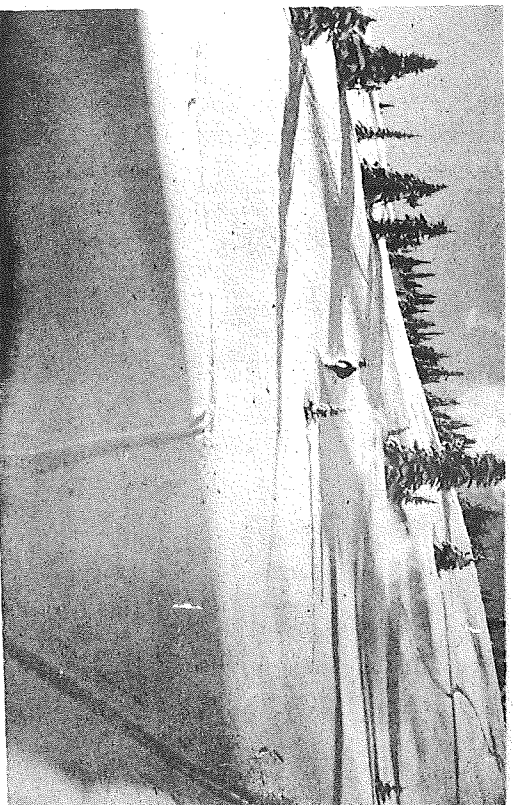
#### HISTORY OF DEVELOPMENT

You may wonder how the development of Big White Mountain came about. Here is a short history of how it happened.

The Kelowna Ski Club had been running a small rope tow area for several years and because of low elevation had a consistent lack of snow for several years.

Two of the club's directors, Doug Meryn and Cliff Serwa looked over every feasible site and recommended Big White Mountain.

The Ski Club, however, felt it was too big for them to tackle, so the two young men tried to interest various private individuals in the area, but had no success.



..... situated in a giant bowl, protected from the weather BIG WHITE OFFERS slopes suitable for all skiers from the novice to the professional. A truly magnificent setting, the ski area is ideal for family fun.

(Continued on Page 29)